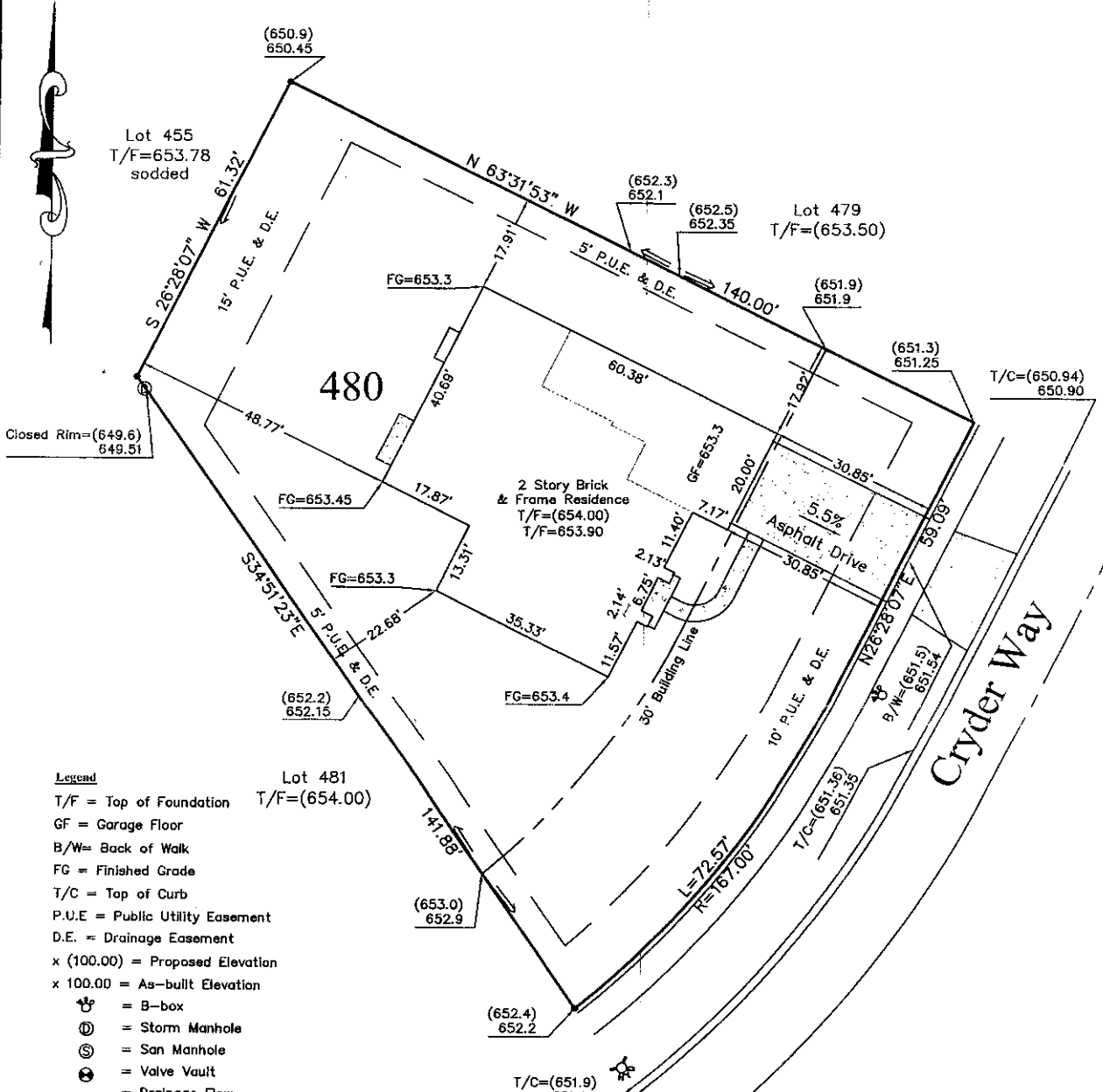


# Final Grading Plat of Survey

Lot 480 of Grande Reserve Unit 6 Subdivision, being a subdivision of part of the South Half of Section 14, Township 37 North, Range 7 East of the Third Principal Meridian in Kendall County, Illinois.



**Legend**

- T/F = Top of Foundation
- GF = Garage Floor
- B/W = Back of Walk
- FG = Finished Grade
- T/C = Top of Curb
- P.U.E = Public Utility Easement
- D.E. = Drainage Easement
- x (100.00) = Proposed Elevation
- x 100.00 = As-built Elevation
- ☐ = B-box
- ⊕ = Storm Manhole
- ⊙ = San Manhole
- ⊖ = Valve Vault
- = Drainage Flow
- = Overland Flow Route
- ☆ = Street Light
- ⊕ = Fire Hydrant
- ⊕ = Storm Inlet

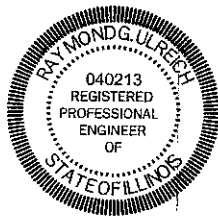
Lot 481  
T/F=(654.00)

**ENGINEER'S CERTIFICATION**

I hereby certify that the final grading of this lot is in substantial conformance with the approved lot grading plan or any significant deviations therefrom is noted on the plan.

Dated at Bartlett, Illinois,

This 5th day of July, 2007.



*Raymond G. Ulreich*  
Raymond G. Ulreich, IL Licensed Professional Engineer No. 062-040213, Expires 11/30/2007

**Taurus Engineering, L.L.C.**

• Iron Pipe Found      • Iron Pipe Set  
All dimensions are in Feet and Decimals thereof.

5N557 Route 59  
Bartlett, IL 60103  
(630) 372-0849  
Fax(630) 372-2572

Prepared For:	Property Address:	Scale: 1"=20'
Gladstone Homes, Inc. 536 Sycamore Lane North Aurora, IL 60542	2835 Cryder Way Yorkville, IL	Revision:      Date