

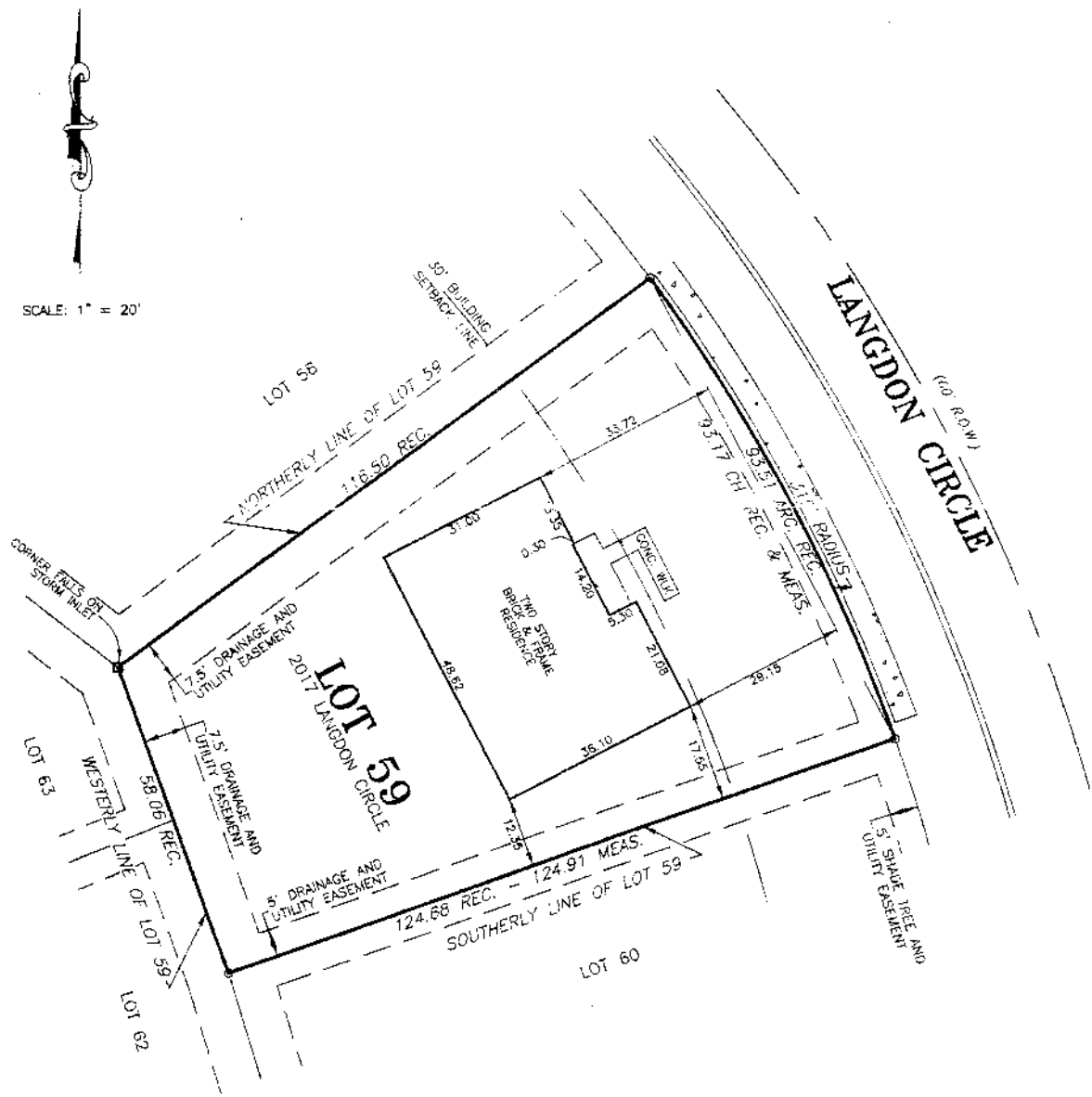
PLAT OF SURVEY

LOT 59 IN KENDALL RIDGE UNIT ONE, A SUBDIVISION OF PART OF THE NORTHEAST QUARTER AND PART OF THE SOUTHEAST QUARTER OF SECTION 36, 1ST TOWNSHIP 36 NORTH, RANGE 8 EAST OF THE THIRD PRINCIPAL MERIDIAN, ACCORDING TO THE PLAT THEREOF RECORDED APRIL 7, 1997, AS DOCUMENT NO. 9703190, IN KENDALL COUNTY, ILLINOIS.

ALL DIMENSIONS ARE GIVEN IN FEET AND DECIMAL PARTS THEREOF AND ARE CORRECT AT 68° FAHRENHEIT.
 * INDICATES IRONS FOUND * INDICATES 5/16" X 30" IRON ROD SET




SCALE: 1" = 20'



STATE OF ILLINOIS)
 COUNTY OF WILL) SS

I, JAMES D. BOLDT, A PROFESSIONAL LAND SURVEYOR IN THE STATE OF ILLINOIS, DO HEREBY CERTIFY THAT I HAVE SURVEYED, STAKED, AND LOCATED THE IMPROVEMENTS ON AND PLATTED THE LAND DESCRIBED IN THE FOREGOING CAPTION AND SHOWN ON THIS PLAT, AND THAT THIS PLAT IS A CORRECT REPRESENTATION THEREOF, DATED AT JOUET, ILLINOIS THIS

2nd DAY OF December 1998, A.D.

 GEOTECH INC CONSULTING ENGINEERS - LAND SURVEYOR		1207 CEDARWOOD DRIVE		JOUET, ILLINOIS 60435	815/730-101
		PROJECT: SMYKAL		FIELD BOOK #: Pg. 6	
DRAWN BY: _____		DATE: _____		SCALE: _____	